



# MORRELL SANCTUARY SOCIETY

For Environmental Education since 1984

787 Nanaimo Lakes Road

Nanaimo B.C. V9R3C2

Phone # 250-753-5811

Web Page: [www.morrellnaturesanctuary.ca](http://www.morrellnaturesanctuary.ca)

E-mail: [morrell@shawbiz.ca](mailto:morrell@shawbiz.ca)

## On-Site School Programs

Booking may be requested by phone or e-mail throughout the school year commencing in September.

A confirmation will be sent shortly after booking your program.

A maximum of 30 students is recommended for quality interpreter-student interaction.

Morrell Programs will be run Rain or Shine. Unless there are high winds.

All programs tie into "EXPERIENCE AND INTERPRET THE LOCAL ENVIRONMENT."

Payment can be made with credit card, cash, or cheque.

### MOTHER NATURE'S RICHES

Spring

Gr. 3-7

Walk in - 2 hours \$60.00

This program will focus on the concepts of Traditional Ecological Knowledge that contains certain plants that were once vitally important to the Coast Salish Peoples of British Columbia

### NATURE WALK (Exploring the forest)

All Year

Gr. 3-12

Walk in - 2 hours \$60.00

This program provides a study of our Coastal Douglas-fir Zone and the relationship between plants, animals, and non-living factors.

### SEEDS & SPORES (Exploring change of season)

Fall

Gr. K-2

Drive in - 1.5 hours \$55.00

Walk in - 2 hours \$60.00

Students will be introduced to seasonal changes affecting plant lifecycles. Focus will be on the characteristics of seeds and spores found in our forest, and the interconnection of animals and plants in the environment.

### INTRODUCTION TO LIFE IN THE POND

Spring

Gr. K-5

Drive in - 1.5 hours \$55.00

Walk in - 2 hours \$60.00

Students will observe plants/animals by dipping and collecting specimens from the pond. Lifecycles, adaptations, and identification will be discussed.



### EXPLORING NATURE

All Year

Gr. K-2

Drive in - 1.5 hour \$55.00

A nature walk, focusing on our local plant and animal life, and encourage the children to use their senses to explore this environment.

### FOREST DETECTIVES

All Year

Gr. 1-3

Drive in - 1.5 hours-\$55.00

Walk in - 2 hours -\$60.00

Students will search for signs of biodiversity in Morrell's forest community utilizing observation, investigation, and deduction skills.

### FOREST ECOLOGY

All Year

Gr. 4-12

Walk in - 2 hours - \$60.00

This program provides a study of various relationships within the forest community, focusing on the basic characteristics of a forest ecosystem.

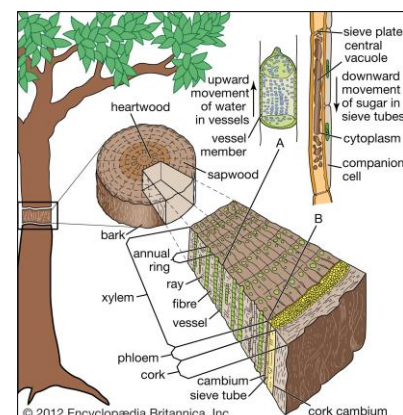
### MEET A TREE

All Year

Gr. 3-4

Walk in - 2 hours - \$60.00

Morrell Sanctuary is a typical mature second growth forest. This program will show students how to identify 7 of the most common trees found in our Coastal Douglas biome.



© 2012 Encyclopaedia Britannica, Inc.